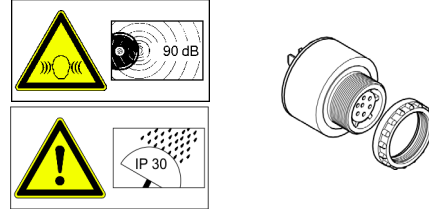
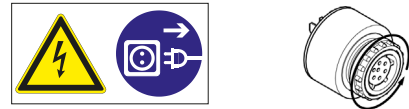
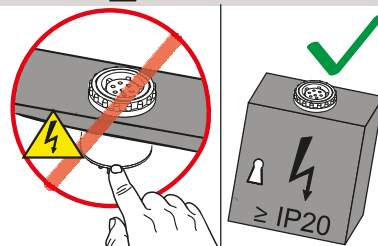


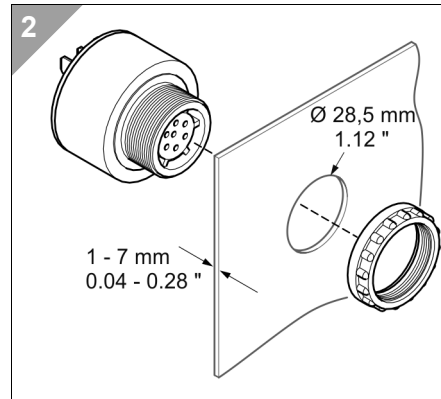
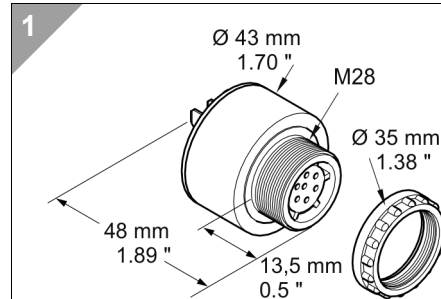
- Ⓓ Anschluss **ausschließlich** durch ausgebildete Elektro-Fachkräfte.
- ⒼⒷ Electrical connection is to be made by trained electrical specialists **only**.
- Ⓕ Le branchement doit **uniquement** être effectué par des professionnels.
- Ⓛ Il collegamento deve essere eseguito **solo** da elettricisti specializzati.
- Ⓔ La conexión **sólo** debe ser realizada por electricistas debidamente formados.
- Ⓟ A ligação deve ser feita **exclusivamente** por profissional elétrico especializado.
- ⓃⓁ De aansluiting mag **enkel** gebeuren door erkende vakmensen.
- ⒸⓏ Připojení smí **provádět** pouze kvalifikovaný personál.
- ⓅⓁ Podłączenie **wyłącznie** przez specjalistów-elektryków.
- ⒻⓁ Liittäminen kuuluu **ainoastaan** koulutettujen sähköalan ammattilaisten tehtäviin.
- ⒻⓁⓤ Подключение проводится только специалистом-электриком.
- ⒻⓁⓤ Bağlantı **sadece** eğitimli elektrik teknisyenleri tarafından yapılmalıdır.
- ⒸⓃ 布线需由专业电工执行



⚠ DANGER

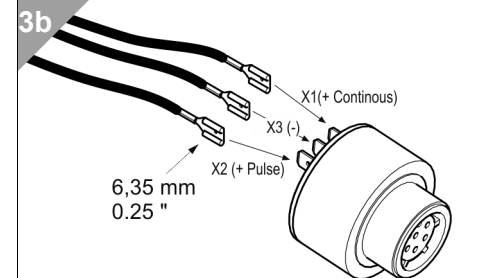
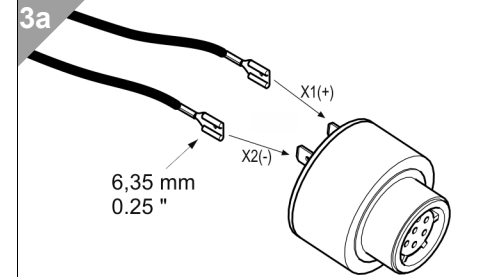


118 068 14	12 V= / ≤ 30 mA
118 068 15	24 V= / ≤ 30 mA
118 068 26	48 V= / ≤ 30 mA
118 068 27	115 V= / ≤ 30 mA
118 068 28	230 V~ / ≤ 30 mA
119 068 15	24 V= / ≤ 30 mA
119 068 26	48 V= / ≤ 30 mA
119 068 27	115 V= / ≤ 30 mA
119 068 28	230 V~ / ≤ 30 mA
119 003 55	24 V= / ≤ 30 mA
119 004 55	24 V= / ≤ 30 mA

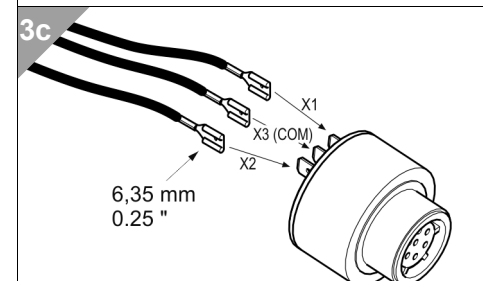


3

3a - 118 068 xx
3b - 119 068 xx
3c - 119 003 55 / 119 004 55



Tone 1	X1	X3 (-)	2400 Hz Continuous
Tone 2	X2	X3 (-)	2400 Hz Pulse



Tone 1	X1	X3 (COM)	2700 Hz, 85 dB (1 m)
Tone 2	X2	X3 (COM)	270 Hz, 85 dB (1 m)
Tone 3	X1 + X2	X3 (COM)	337 Hz, 90 dB (1 m)